

WELLINGTON PRESERVE REPLAT NO. 3

BEING A REPLAT OF LOTS 4 THROUGH 8 OF BLOCK C AND LOTS 15 THROUGH 25, BLOCK C, WELLINGTON PRESERVE, AS RECORDED IN PLAT BOOK 100, PAGES 180 THROUGH 186, OF THE PUBLIC RECORDS OF PALM BEACH COUNTY, FLORIDA, LYING IN SECTION 34, TOWNSHIP 44 SOUTH, RANGE 41 EAST, VILLAGE OF WELLINGTON, PALM BEACH COUNTY, FLORIDA
JULY, 2017

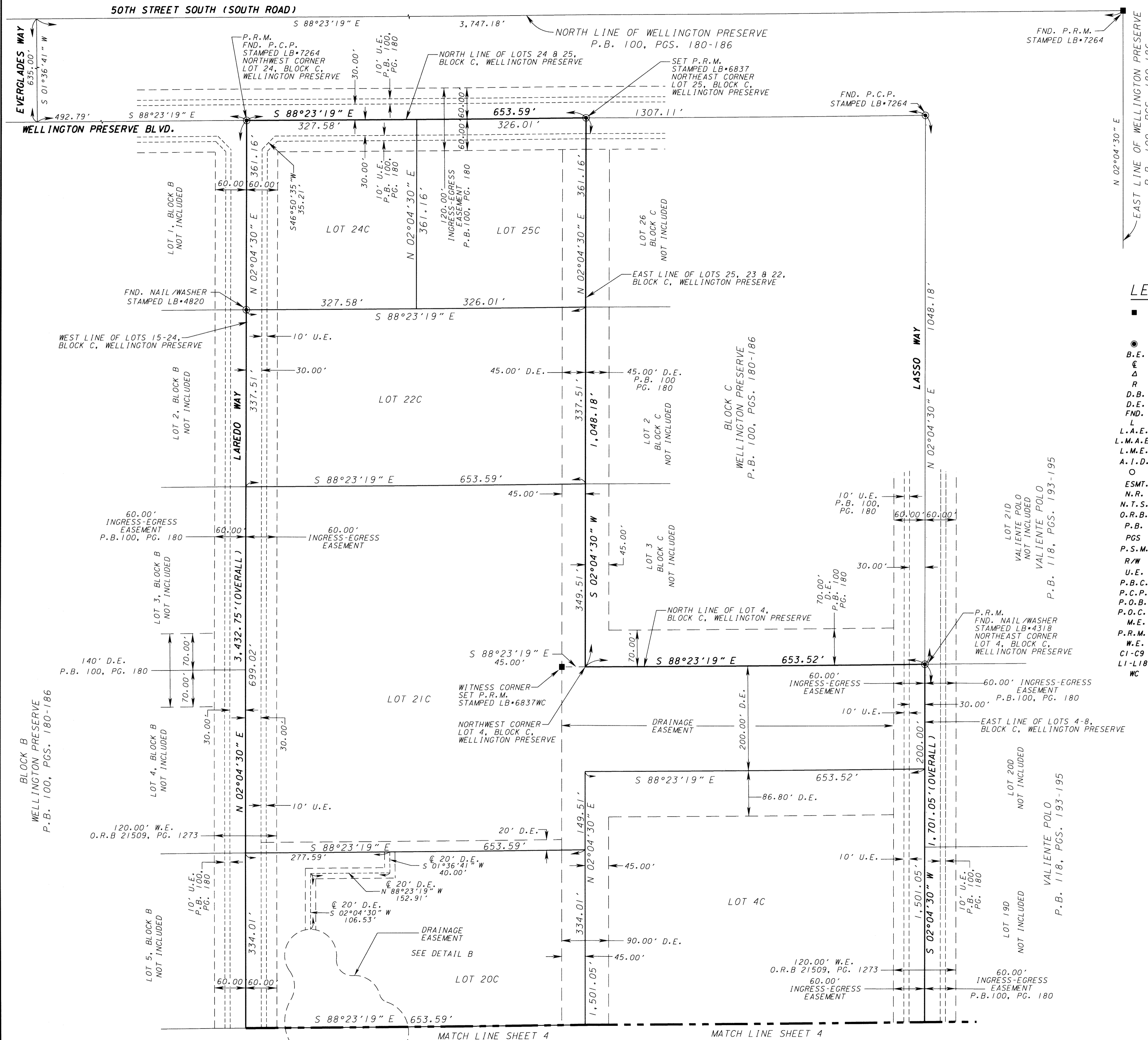
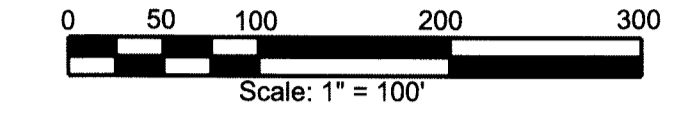
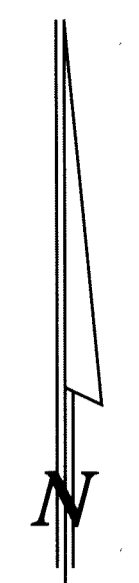
SHEET 3 OF 4

151

STATE OF FLORIDA
COUNTY OF PALM BEACH
THIS PLAT WAS FIELD FOR
RECORD AT _____ P.M.
THIS _____ DAY OF _____
A.D. 2017 AND DULY RECORDED
IN PLAT BOOK _____ ON
PAGES _____ AND _____

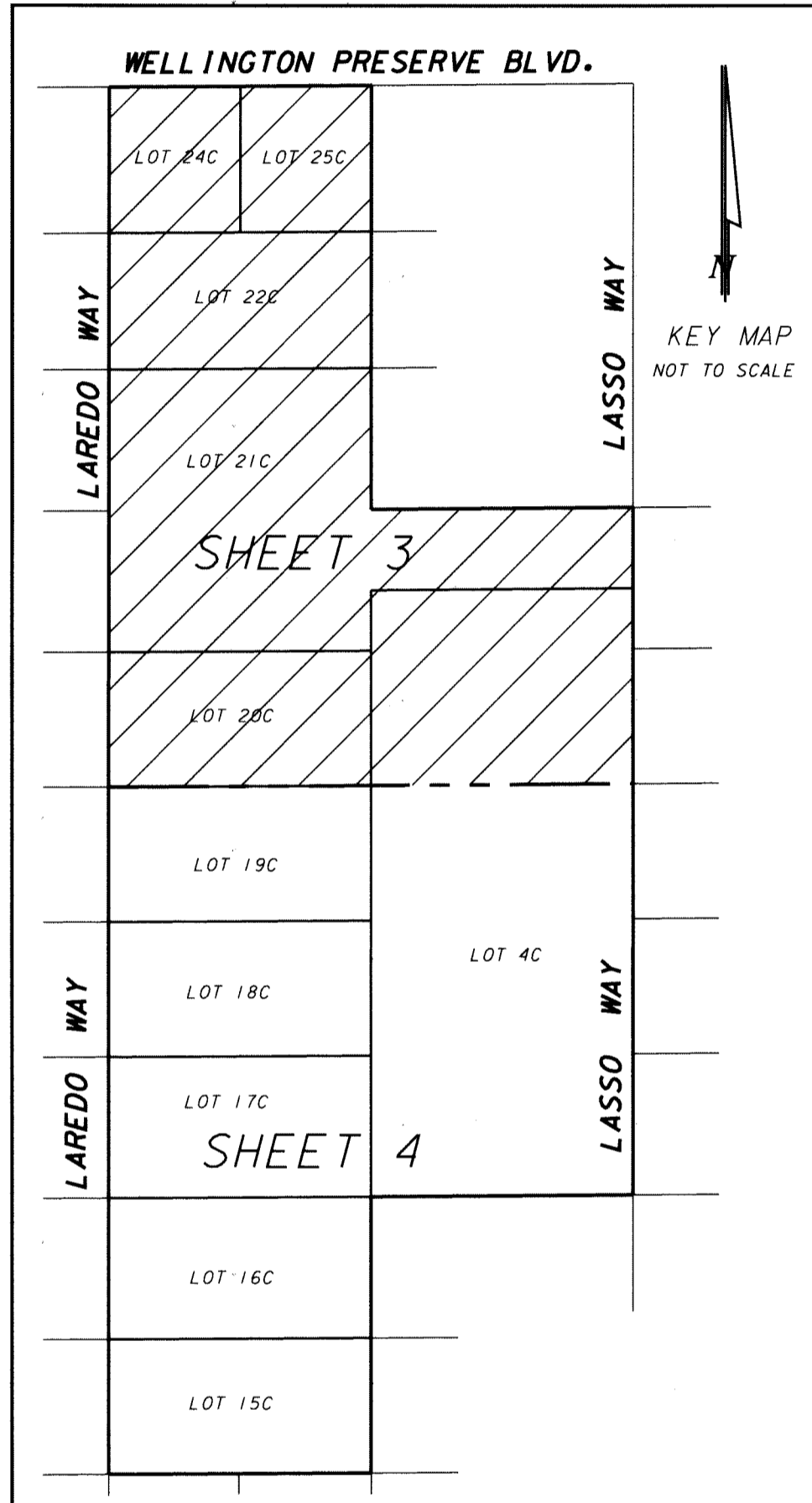
SHARON R BOCK
CLERK AND COMPTROLLER

BY: _____
DEPUTY CLERK



LEGEND AND ABBREVIATIONS:

- -SET PERMANENT REFERENCE MONUMENT, LB-6837
4" X 4" CONC. MONUMENT WITH MAG NAIL AND WASHER STAMPED PRM LB 6837
- -MAG NAIL & WASHER
- B.E. -BUFFER EASEMENT
- ⊖ -CENTRAL LINE
- Δ -CENTRAL ANGLE
- R -RADIUS
- D.B. -DEED BOOK
- D.E. -DRAINAGE EASEMENT
- FND. -FOUND
- L -ARC LENGTH
- L.A.E. -LIMITED ACCESS EASEMENT
- L.M.A.E. -LAKE MAINTENANCE ACCESS EASEMENT
- L.M.E. -LAKE MAINTENANCE EASEMENT
- A.I.D. -ACME IMPROVEMENT DISTRICT
- -MONUMENT TO BE SET, LB-6837
- ESMT. -EASEMENT
- N.R. -NOT RADIAL
- N.T.S. -NOT TO SCALE
- O.R.B. -OFFICIAL RECORD BOOK
- P.B. -PLAT BOOK
- PGS -PAGES
- P.S.M. -PROFESSIONAL SURVEYOR AND MAPPER
- R/W -RIGHT OF WAY
- U.E. -UTILITY EASEMENT
- P.B.C. -PALM BEACH COUNTY
- P.C.P. -PERMANENT CONTROL POINT
- P.O.B. -POINT OF BEGINNING
- P.O.C. -POINT OF COMMENCEMENT
- M.E. -MAINTENANCE EASEMENT
- P.R.M. -PERMANENT REFERENCE MONUMENT
- W.E. -WATER EASEMENT
- CI-C9 -CURVE (SEE CURVE TABLE)
- LI-L18 -LINE (SEE LINE TABLE)
- WC -WITNESS CORNER



NO.	Δ	RADIUS	LENGTH
C1	22°36'49"	50.00'	193.39'
C2	98°42'43"	30.00'	52.21'
C3	78°27'39"	50.00'	68.47'
C4	57°15'10"	20.00'	19.99'
C5	182°29'48"	60.00'	191.11'
C6	38°26'29"	80.00'	53.67'
C7	98°53'27"	80.00'	139.47'
C8	39°54'26"	80.00'	55.72'
C9	66°57'51"	60.00'	58.44'

